

SAFETY FIRST!
Operation & Maintenance Manual
RV Series Vertical Compactor

Standard Model ☐ PSR Model ☒



Rotobale Compaction Solutions Inc.

7232 Arthur Road #5 West, Kenilworth Ontario, N0G 2E0

Ph: 800-565-8027/ Fax: 519-323-3816

www.rotobalecompaction.ca

Rotobale Compaction Solutions Inc.
Kenilworth, Ontario, N0G 2E0
Tele (519) 323-3673 Fax: (519) 323-3816

RV Series Compactors

Operation Manual

TO OPERATE COMPACTOR:

1. Insert the key in the switch and turn it right. If equipped with digital start, enter start code.
2. The machine will start and ram will go to the top and pause. At this time you will be able to open the door and place material inside chamber.
3. Closing door will start machine automatically and compress material into bin.

POWER ON LIGHT: Indicates power to system.

STOP BUTTON: Press to stop the compactor.

¾ FULL LIGHT: This light will turn on when the pressure inside the charging chamber reaches a pre-set limit (1,400 psi).

FULL LIGHT: When pressure inside the charging chamber reaches a pre-set limit, (1,800 psi), the “full light” will illuminate. The container needs to be emptied.
Pressing stop button will turn light off and reset system

Rotobale Compaction Solutions Inc.

Kenilworth, Ontario, N0G 2E0

Tele (519) 323-3673 Fax: (519) 323-3816

RV Series Compactors Maintenance Manual

Hydraulic System:

The manufacturer recommends regular inspection of all hoses and visual inspection of hydraulic components. All inspections must be done with compactor disabled. By doing so the user becomes more familiar with the compactor, which in turn guarantees early detection of possible problems (E.g.: leaks). While inspecting hoses look for cuts, abrasions and fluid. Look for leaks at and around the 'power pack', at all hose connections and inside the rear of the compaction chamber. If any hydraulic fluid is visible, the user should contact the manufacturer. The hydraulic fluid level in the power pack reservoir should be maintained at 2" from the top of the tank, with the ram in the up position. Only a qualified technician should service any components in the hydraulic system.

Lockout Procedure:

NOTE: Only a qualified technician should perform work on electrical system. To turn off and lockout the power supply, first locate the electrical disconnect box for the compactor. This box should be located within 30 feet of the machine. Pull the handle down or turn the switch to the "off" position to shut off the electricity. Put a padlock through the holes of the handle or switch and lock it so that it cannot be turned on without removing the lock. Only the person locking out the machine should have a key for the padlock. If more than one person is involved, the person who disconnected and locked out the power supply should communicate the purpose and status of the disconnecting and locking out. A non-conducting tag secured in a conspicuous location may serve this purpose. For more guidelines concerning this procedure, refer to the "Occupational Health and Safety Act and Regulations for Industrial Establishments" section

Warranty:

All equipment designed and manufactured by Rotobale Compaction Solutions Inc. (RCS) carries a (1) year parts and labour guarantee. A Rotobale waste system is constructed of high-grade materials and is guaranteed to perform on a continued basis at its rated capacity. Any parts that prove defective within (1) year from the date of installation will be replaced without charge, provided the purchaser notifies any such defects to RCS. Some units may be purchased with extended warranties.

Voiding of Warranty:

If the contents of this manual are explicitly followed, the operation of the Rotobale waste system is guaranteed. If however operations are performed in a manner not in accordance with these instructions and a defect appears in the waste system, the owner shall make void the warranty that accompanies their Rotobale machine. In addition, defects resulting from service work not authorized by RCS shall render the warranty void.

Declaration of Conformance

Pre-Start Health and Safety Review Exemption

Machine Name:	Vertical Compactor
Machine Model:	RV – Series (RV-6 / RV-8)

Based on the safety component installation instructions and electrical drawings provided, the above items are in compliance with the following standards;

Description	Standards requirement met for compliance
Safety control circuit design	Is in accordance with the manufacturer requirements and CSA Z432, Clause 8.2 Safety control system performance criteria.
Emergency stop	Is in accordance with NFPA 79 Electrical Standard for Industrial Controls, Clause 9.5.2 Stop Functions – Category <0,1>

Rotobale Compaction Solutions Inc declares that the above noted machine has been designed and constructed in accordance with the following standards:

- CAN/CSA Z432-16 – Safeguarding of Machinery
 - ISO 13849-1 - Safety of machinery — Safety-related parts of control systems - Part 1: General principles for design
- CAN/CSA C22.1 – Canadian Electrical Code, Part 1
- SPE-1000 - Model Code for the Field Evaluation of Electrical Equipment

Rotobale Compaction Solutions Inc also declares that the protective elements employed on this machine have been installed according to the manufacturer's instructions.

This document can be used as a declaration that forms a Pre-Start Health and Safety Review Exemption as required by Ontario Regulation 851, Section 7, subsection 10.

This document must be kept readily available in the workplace for as long as the protective element remains or is used in the workplace.

Rotobale Compaction Solutions
7232 Arthur Side Road # 5 West,
Kenilworth, Ontario N0G 2E0
Tele: (519) 323-3673 Fax: (519) 323-3816



RV Series Vertical Compactor - Annual Inspection Report

Customer Name _____ Inspection Date: _____

Make/Model of Equipment _____ Inspected by: _____

Serial # _____

<u>Electrical Inspection Points</u>	Good	Needs Repair	Comments
Check Key Switch or Key Pad (if Appl.)			
Check Emergency Stop Button			
Check all Indicator Lights			
Check Loading Door Switch			
CAUTION LOCK OUT / TAG OUT			
Check all Electrical Connections in Panel are Tight			
Check all Timers are Secured to Base			
Check Main Supply & Control Fuse Sizing			

<u>Hydraulic Inspection Points</u>	Good	Needs Repair	Comments
Check Pump, Suction & Pressure Hoses			
Check Main Valve for Leaks			
Check Relief Valve for Leaks			
Check Cylinder Extend & Retract Hoses			
Check Oil Level (Down 2" from top of tank when ram up)			

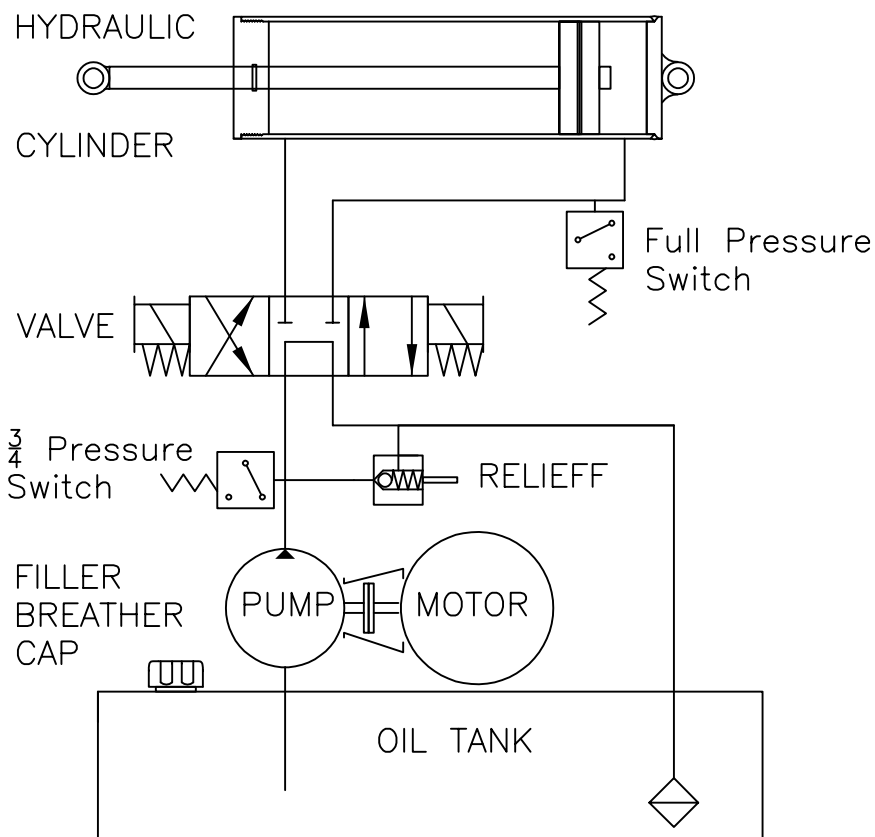
<u>Compactor Inspection Points</u>	Good	Needs Repair	Comments
Check Ram			
Check Cylinder Pins are Secure			
Check Cylinder Shaft Seals			
Check Cavity above Ram is Clear of Debris			
Check Cover Secure			
Check Stand Anchor Points are Secure			

<u>Container Inspection Points</u>	Good	Needs Repair	Comments
Check Door Handle & Latching Assembly			
Check & Grease Door Hinges			
Check Lift Pockets			
Check Container for Leaks & Damage			

ROTOBALE COMPACTION SOLUTIONS RV HYDRAULICS

AUGUST 2020

PARTS	DESCRIPTION
1) @ $\frac{3}{8}$ X 28 X $\frac{3}{8}$ ENDS	B - CYLINDER HOSE
1) @ $\frac{3}{8}$ X 19 X $\frac{3}{8}$ ENDS	A - CYLINDER HOSE
1) @ $\frac{1}{2}$ X 7 pipe with boss	SUCTION HOSE
1) $\frac{3}{8}$ X 2 NIPPLE	P - HOSE
1) $\frac{1}{2}$ X 8 Rubber with $\frac{3}{8}$ end	T - HOSE
56 FRAME 1800 RPM	2 HP MOTOR
R 75 $\frac{5}{8}$ X $\frac{1}{2}$	COUPLING
C - FLANGE 3 $\frac{1}{2}$	BELL HOUSING
G.P.M.= 1.5 AP-10-34-PZR	HYDRAULIC PUMP 03-699-01
1) CYLINDER @ 4 X 15	RAM CYLINDER
WE43 - G03 - C60 - A110	VALVE
MANIFOLD ROTOBALE # 2	RAM MANIFOLD
RELIEF 85002129	MAIN RELIEF



NOCOLUBE AW SERIES

Product Data Sheet

NOCOLUBE AW SERIES

NOCOLUBE AW Series are premium hydraulic fluids formulated from high quality paraffinic base oils that meets severe pump requirements of all major manufacturers. NOCOLUBE AW Series provides outstanding anti-wear protection. The oils will provide excellent long service life under severe industrial and mobile hydraulic applications.

Typical Approvals

Vickers I-286-S, M-2950-S	AFNOR NF-E 48-690/1
Cincinnati Milacron P-68, P-69, P-70	AFNOR E 48-603 HM
Denison HF-0	ISO 11158 TYPE HM
DIN 51524, Part 2	

GENERAL CHARACTERISTICS

NOCOLUBE AW	32	46	68	100	220
Product Code	NOC1657	NOC1658	NOC1659	NOC2778	NOC2779
Appearance	Light Pale	Light Pale	Light Pale	Light Pale	Dark Pale
Flash Pt., COC °C	212	226	234	242	258
Pour Point, °C	-24	-24	-18	-15	-15
Viscosity					
CST @ 40°C	32.0	46.0	68.0	100.0	220.0
CST @ 100°C	5.4	6.7	8.5	11.1	18.7
Rust ASTM D 665B	Pass	Pass	Pass	Pass	Pass
Copper Strip Corrosion	1A	1A	1A	1A	1A
Oxidation Life (hours), ASTM D-943	2500+	2500+	2500+	ND	ND
Viscosity INDEX	104	104	107	95	93

FEATURES

- Outstanding Thermal Stability
- Long Service Life
- Superior Hydrolytic Stability
- Excellent Remissibility
- Low Pour Point
- Qualified Products

BENEFITS

- Reduces sludge and sticking problems in close tolerance components
- Provides superior system cleanliness with reduced oxidation
- protects against rust and corrosion
- Works well when, contaminated with a small amount of water. Readily separates large amounts of water
- Good low temperature performance
- Proven field performance

Don't pollute! Dispose of used oil properly!

Call your NOCO sales representative for details on our Oil Recovery Program.

All reasonable care has been taken to ensure that the above information is accurate as of the date of printing.

NOCO Energy CORP.
Tonawanda, NY 14150
(800) 500-6626

DATE
16 / 03 / 2019

Product Data Sheet

NOCO MULTI-PURPOSE EP#2

NOCO MULTI-PURPOSE EP#2 is compatible with the most popular greases in use today, including Aluminum complex, calcium, calcium complex and lithium grease. It is not compatible with barium Ben tone or poly urea greases.

NOCO MULTI-PURPOSE EP#2 is multi-purpose, premium quality grease made from high viscosity Index base oils and a lithium complex soap thickener system. Because of its outstanding performance Properties, it can be used for the lubrication of machinery under heavy loads and high temperatures in a wide range of automotive, industrial, agricultural, mining and construction applications.

NOCO MULTI-PURPOSE EP#2 can be used to lubricate plain ball and roller bearings in equipment Operating from slow to high speeds and at temperatures ranging from -24° C (15°F) to 170°C (365°F).

TYPICAL PROPERTIES & CHARACTERISTICS

Test Methods	Description	Specification
	NLGI Grade	2
ASTM D 217	Cone penetration @ 77°F, worked 60 strokes	265 - 295
ASTM D 128	Thickener Type	Lithium Complex
ASTM D 128	Thickener Content, %	4 - 7
ASTM D 2265	Dropping Point	168°C, (360° F)
ASTM D 445	Base Oil Viscosity, cut @ 40°C	175 - 180
ASTM D 2270	Viscosity Index	80 min.
VISUAL	Color	Dark Amber
VISUAL	Appearance	Smooth
ASTM D 2509	Timkin OK Load, lbs.	35 min

Don't Pollute! Dispose or used oil properly!

Call your NOCO sales representative for details on our Oil Recovery Program

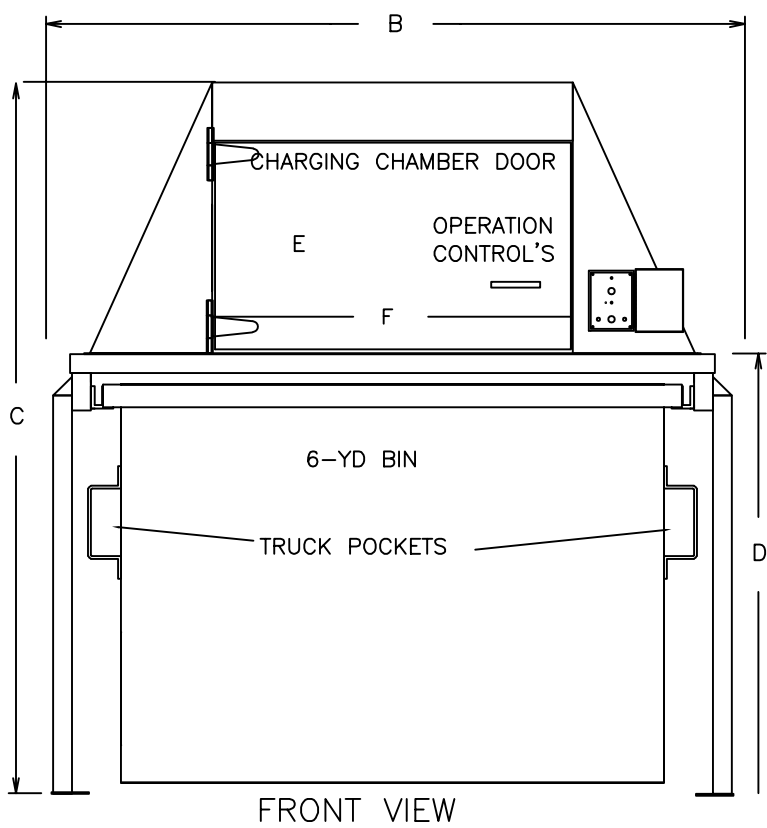
All reasonable care has been taken to ensure that the above information is accurate as of the date of printing.

NOCO Energy Corp.
Tonawanda, NY 14150
(800) 500-6626

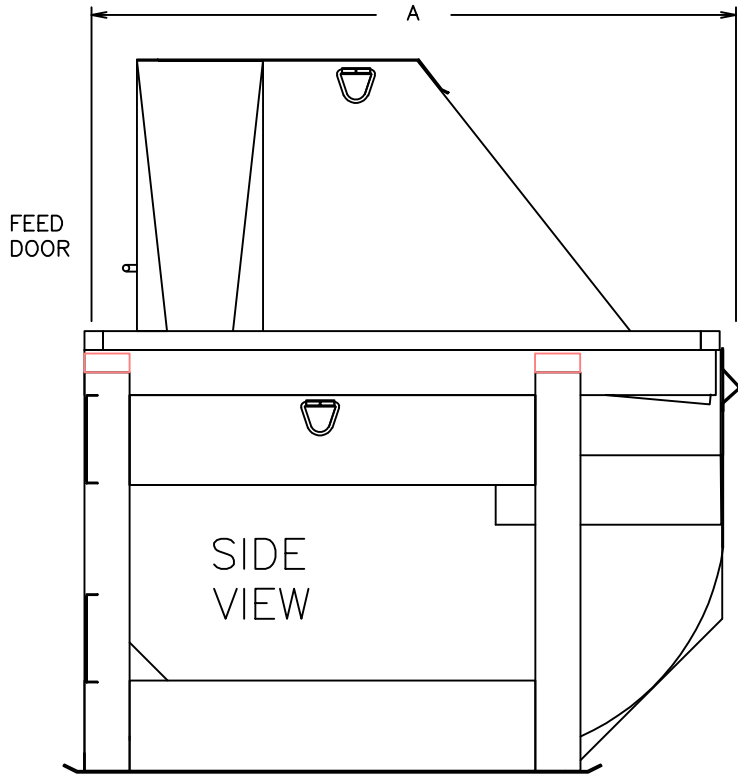
ROTOBALE COMPACTION SOLUTIONS

KENILWORTH, ONTARIO, CANADA. NOG 2E0

TEL: 519-323-3673 FAX: 519-323-3816



FRONT VIEW



SIDE VIEW

CONTAINER CAPACITY		6 YARD	8 YARD
OVERALL DIMENSIONS	LENGHT A	90"	90"
	WIDTH B	91"	91"
	HEIGHT C	94 $\frac{1}{2}$ "	103
	HEIGHT D	59"	67"
CHARGE OPENING	HEIGHT E	20"	20"
	WIDTH F	48"	48"
MOTOR RATING	HP	2	2
CYLINDER	BORE	4"	4"
MAXIMUM FORCE	LB	22500	22500
SHIPPING WEIGHT	LB	3400	3700
PENETRATION		10"	10"

THE VERTICAL COMPACTORS ARE DESIGNED WITH BOTH THE HAULER AND USER IN MIND. THE VERTICAL COMPACTOR MAKES DUMPING SIMPLE Just Lift Side Closest To Truck And Pull Out FULLY ENGINEERED STOP DESIGN

- * NO SPILLAGE
- * LOW MAINTENANCE
- * SPACE SAVING LAYOUT
- * ULTRA-SAFE OPERATION
- * AUTO-CYCLE COMPACTING
- * LOCKABLE CONTROL PANEL

SPECIFICATIONS ARE SUBJECT TO CHANGE WITHOUT NOTICE TO ACCOMODATE EQUIPMENT IMPROVEMENTS