

SAFETY FIRST!

Operation & Maintenance Manual

XL – 42 Vertical Baler

Standard Model ☐ PSR Model ☒



Rotobale Compaction Solutions Inc.

7232 Arthur Road #5 West, Kenilworth Ontario, N0G 2E0

Ph: 800-565-8027/ Fax: 519-323-3816

www.rotobalecompaction.ca

Vertical Baler Operating Instructions

- 1) Lay a large flat piece of material inside the bale chamber. It is very important to **securely close the bottom door**. Tighten the latch wheel by hand only. Do not over tighten by any other method.
- 2) Feed material into the baler. (spreading material out evenly increases bale weight).
- 3) Close the top door (door must not be obstructed by material).
- 4) Press the “Start” button and the ram proceed downward compressing material At the end of the downward stroke the ram will automatically rise and lift the top door.
- 5) Repeat steps 2, 3, and 4 until the “full” light illuminates.
- 6) When full: Turn the “off/on” key (off & on) press (Start) ram will go to the top.
- 7) Place a large flat piece of material inside the baler, on top of the bale being made.
- 8) Close the top door.
- 9) Press the “start” button. The ram will proceed downward on the bale and the full light will re-activate.
- 10) Turn the “off/on” switch to off.
- 11) With everyone clear from the front of the baler, release the bottom door latch and open the bottom door.
- 12) Wear leather gloves and safety glasses for this process
 - Stand in front of the baler and insert and push the “tie probe” through a top slot. It will go all the way around and come out at the bottom.
 - Attach cord to end of (bale tie probe) and pull back with the cord attached
 - Un-attach cord and securely tie the two cord ends together.
 - Repeat procedure for all 6 slots.
- 13) Place skid in front of baler.
- 14) Ensure everyone is clear from the front of the baler.
- 15) Turn the “off/on” switch to on.
- 16) To eject bale, push and hold the (eject button) The ram will lift the top door to the top. The bale will eject automatically onto the skid. Release the eject button.
- 17) Congratulations! You just made a bale. Go to step (1).

Rotobale Compaction Solutions Inc.

XL- Baler

Monthly Maintenance Check

Hydraulic System:

The manufacturer recommends monthly inspection of all hoses and visual inspection of hydraulic components. All inspections must be done with baler disabled. By doing so the user becomes more familiar with the baler, which in turn guarantees early detection of possible problems (E.g.: leaks). When inspecting hoses look for cuts, abrasions and fluid. If any hydraulic fluid is visible, the user should contact the manufacturer. The hydraulic fluid level in the baler reservoir should be maintained at 1½ " from the top of the tank, with the ram in the up position. Only a qualified technician should service any components in the hydraulic system. Apply grease to the ram guides and cylinder pin fittings monthly.

Electrical System:

NOTE: Only a qualified technician. Should perform work on electrical system

The person working on these machines should turn the machine off with the stop button. To turn off and lockout the power supply, follow the electrical supply cord from the machine to the disconnect box on the wall. This box should be located within 30 feet of the machine. Pull the handle down or turn the switch to the "off" position to shut off the electricity. Put a padlock through the holes of the handle or switch and lock it so that it cannot be turned on without removing the lock. Only the person locking out the machine should have a key for the padlock. If more than one person is involved, the person who disconnected and locked out the power supply should communicate the purpose and status of the disconnecting and locking out. A non-conducting tag secured in a conspicuous location may serve this purpose. For more guidelines concerning this procedure, refer to the "Occupational Health and Safety Act and Regulations for Industrial Establishments" section

Warranty:

All equipment designed and manufactured by Rotobale Compaction Solutions Inc. (RCS) carries a (1) year parts and labour guarantee. A Rotobale waste system is constructed of high-grade materials and is guaranteed to perform on a continued basis at its rated capacity. Any parts that prove defective within (1) year from the date of installation will be replaced without charge, provided the purchaser notifies any such defects to RCS. Some units may be purchased with extended warranties.

Voiding of Warranty:

If the contents of this manual are explicitly followed, the operation of the Rotobale waste system is guaranteed. "If, however operations are performed in a matter not in accordance with these instructions and a defect appears in the waste system, the owner shall make void the warranty that accompanies their Rotobale machine. In addition, defects resulting from Rotobale Compaction Solutions Inc.

Declaration of Conformance

Pre-Start Health and Safety Review Exemption

Machine Name:	Vertical Baler
Machine Model:	XL – Series (XL-42 / XL-62)

Based on the safety component installation instructions and electrical drawings provided, the above items are in compliance with the following standards;

Description	Standards requirement met for compliance
Safety control circuit design	Is in accordance with the manufacturer requirements and CSA Z432, Clause 8.2 Safety control system performance criteria.
Emergency stop	Is in accordance with NFPA 79 Electrical Standard for Industrial Controls, Clause 9.5.2 Stop Functions – Category <0,1>

Rotobale Compaction Solutions Inc declares that the above noted machine has been designed and constructed in accordance with the following standards:

- CAN/CSA Z432-16 – Safeguarding of Machinery
 - ISO 13849-1 - Safety of machinery — Safety-related parts of control systems - Part 1: General principles for design
- CAN/CSA C22.1 – Canadian Electrical Code, Part 1
- SPE-1000 - Model Code for the Field Evaluation of Electrical Equipment

Rotobale Compaction Solutions Inc also declares that the protective elements employed on this machine have been installed according to the manufacturer's instructions.

This document can be used as a declaration that forms a Pre-Start Health and Safety Review Exemption as required by Ontario Regulation 851, Section 7, subsection 10.

This document must be kept readily available in the workplace for as long as the protective element remains or is used in the workplace.

Rotobale Compaction Solutions
7232 Arthur Side Road # 5 West,
Kenilworth, Ontario N0G 2E0
Tele: (519) 323-3673 Fax: (519) 323-3816



XL-Series Vertical Baler - Annual Inspection Report

Customer Name _____ Inspection Date: _____

Make/Model of Equipment _____ Inspected by: _____

Serial # _____

<u>Electrical Inspection Points</u>	Good	Needs Repair	Comments
Check Key Switch & Start Button			
Check Emergency Stop Button			
Check Eject Button			
Check Full & Power Indicator Lights			
Check Top & Bottom Door Switches			
CAUTION LOCK OUT / TAG OUT			
Check all Electrical Connections in Panel are Tight			
Check all Timers are Secured to Base			
Check Main Supply & Control Fuse Sizing			

<u>Hydraulic Inspection Points</u>	Good	Needs Repair	Comments
Check Cylinder Extend / Retract Hoses			
Check Cylinder Shaft Seals			
Check Ejector Hoses			
Check Main Valve for Leaks			
Check Pump, Suction / Pressure Hoses			
Check Relief Valve for Leaks			
Check Oil Level (Down 2" from top of tank when ram up)			

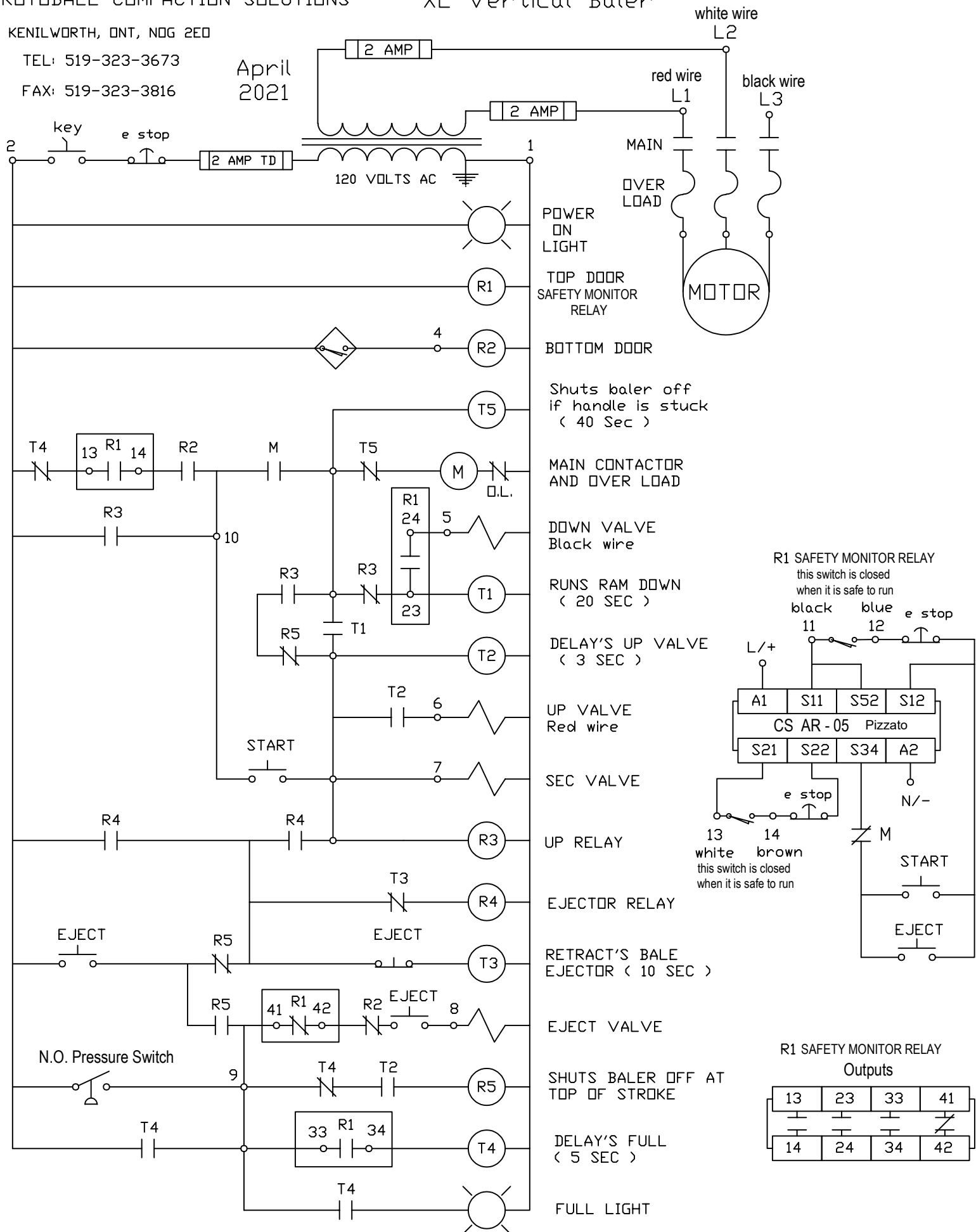
<u>Baler Inspection Points</u>	Good	Needs Repair	Comments
Check Cylinder Lugs			
Check Cylinder Pins are Secure & Grease			
Check Door Chains & Mounting Brackets			
Check Door Pulley Assembly			
Check Top Door & Counterweights			
Check Ram Hold up Mechanism (if appl.)			
Check Ram Side Wear Strips			
Check & Grease Top Door Latch			
Check & Grease Turnbuckle			
Check & Grease Bottom Door Hinges			
Check Ejector Assembly			
Check Anchor Bolts are Secure			
Check Bale Tie Probe			

KENILWORTH, ONT, NOG 2EO

TEL: 519-323-3673

FAX: 519-323-3816

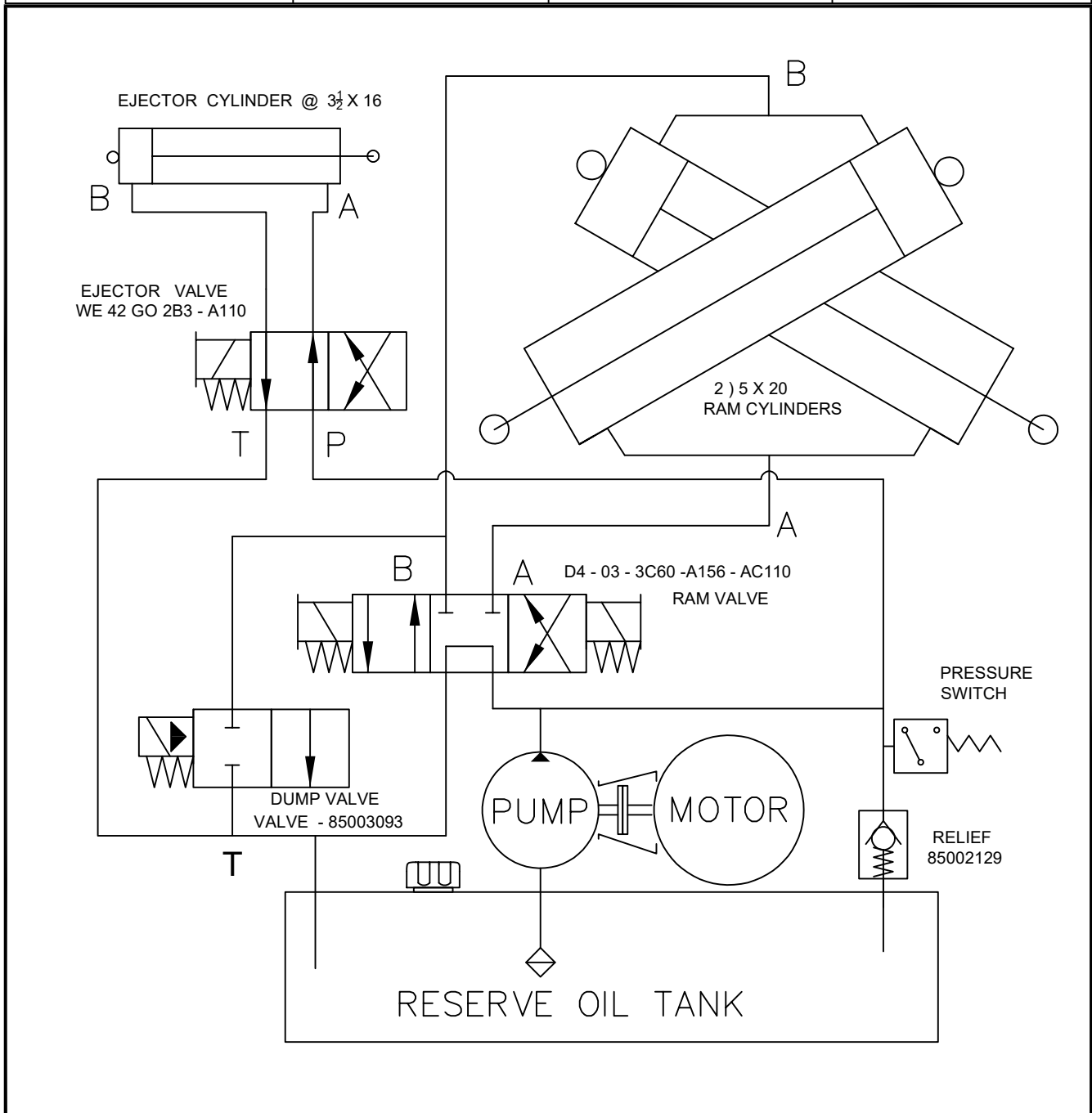
April
2021



ROTOBALE COMPACTION SOLUTIONS

XL - 42 HYDRAULICS

PARTS	DESCRIPTION	PARTS	DESCRIPTION
4) @ $\frac{1}{2}$ X 36 X $\frac{1}{2}$ ENDS	CYLINDER HOSE	1) CYLINDER @ $3\frac{1}{2}$ X 16	EJECTOR CYLINDER
1) @ $\frac{3}{4}$ X 26 $\frac{3}{4}$ ENDS	SUCTION HOSE	2) CYLINDER @ 5 X 20	RAM CYLINDER
1) @ $\frac{1}{2}$ X 18 $\frac{1}{2}$ ENDS	P - HOSE	VALVE - 85003093	DUMP VALVE
1) @ $\frac{1}{4}$ X 30 $\frac{1}{4}$ ENDS	EJECTOR P - HOSE	VALVE - WE 42 GO 2B3 - A110	EJECTOR VALVE
1) @ $\frac{1}{4}$ X 132 X $\frac{1}{4}$ ENDS	A - EJECTOR CYL HOSE	D4 - 03 - 3C60 - A156 - AC110	RAM VALVE
1) @ $\frac{1}{4}$ X 116 X $\frac{1}{4}$ ENDS	B - EJECTOR CYL HOSE	MANIFOLD ROTOBALE # 1	EJECTOR MANIFOLD
215 FRAME 1800 RPM	MOTOR	MANIFOLD ROTOBALE # 5	RAM MANIFOLD
R 100 $1\frac{3}{8}$ X $\frac{5}{8}$	COUPLING	RELIEF 85002129	MAIN RELIEF
A-MOUNT 5 $\frac{5}{8}$	BELL HOUSING	HAIR 22 - 10 HP	HYDRAULIC PUMP



NOCOLUBE AW SERIES

Product Data Sheet

NOCOLUBE AW SERIES

NOCOLUBE AW Series are premium hydraulic fluids formulated from high quality paraffinic base oils that meets severe pump requirements of all major manufacturers. NOCOLUBE AW Series provides outstanding anti-wear protection. The oils will provide excellent long service life under severe industrial and mobile hydraulic applications.

Typical Approvals

Vickers I-286-S, M-2950-S	AFNOR NF-E 48-690/1
Cincinnati Milacron P-68, P-69, P-70	AFNOR E 48-603 HM
Denison HF-0	ISO 11158 TYPE HM
DIN 51524, Part 2	

GENERAL CHARACTERISTICS

NOCOLUBE AW	32	46	68	100	220
Product Code	NOC1657	NOC1658	NOC1659	NOC2778	NOC2779
Appearance	Light Pale	Light Pale	Light Pale	Light Pale	Dark Pale
Flash Pt., COC °C	212	226	234	242	258
Pour Point, °C	-24	-24	-18	-15	-15
Viscosity					
CST @ 40°C	32.0	46.0	68.0	100.0	220.0
CST @ 100°C	5.4	6.7	8.5	11.1	18.7
Rust ASTM D 665B	Pass	Pass	Pass	Pass	Pass
Copper Strip Corrosion	1A	1A	1A	1A	1A
Oxidation Life (hours), ASTM D-943	2500+	2500+	2500+	ND	ND
Viscosity INDEX	104	104	107	95	93

FEATURES

- Outstanding Thermal Stability
- Long Service Life
- Superior Hydrolytic Stability
- Excellent Remissibility
- Low Pour Point
- Qualified Products

BENEFITS

- Reduces sludge and sticking problems in close tolerance components
- Provides superior system cleanliness with reduced oxidation
- protects against rust and corrosion
- Works well when, contaminated with a small amount of water. Readily separates large amounts of water
- Good low temperature performance
- Proven field performance

Don't pollute! Dispose of used oil properly!

Call your NOCO sales representative for details on our Oil Recovery Program.

All reasonable care has been taken to ensure that the above information is accurate as of the date of printing.

NOCO Energy CORP.
Tonawanda, NY 14150
(800) 500-6626

DATE
16 / 03 / 2019

Product Data Sheet

NOCO MULTI-PURPOSE EP#2

NOCO MULTI-PURPOSE EP#2 is compatible with the most popular greases in use today, including Aluminum complex, calcium, calcium complex and lithium grease. It is not compatible with barium Ben tone or poly urea greases.

NOCO MULTI-PURPOSE EP#2 is multi-purpose, premium quality grease made from high viscosity Index base oils and a lithium complex soap thickener system. Because of its outstanding performance Properties, it can be used for the lubrication of machinery under heavy loads and high temperatures in a wide range of automotive, industrial, agricultural, mining and construction applications.

NOCO MULTI-PURPOSE EP#2 can be used to lubricate plain ball and roller bearings in equipment Operating from slow to high speeds and at temperatures ranging from -24° C (15°F) to 170°C (365°F).

TYPICAL PROPERTIES & CHARACTERISTICS

Test Methods	Description	Specification
	NLGI Grade	2
ASTM D 217	Cone penetration @ 77°F, worked 60 strokes	265 - 295
ASTM D 128	Thickener Type	Lithium Complex
ASTM D 128	Thickener Content, %	4 - 7
ASTM D 2265	Dropping Point	168°C, (360° F)
ASTM D 445	Base Oil Viscosity, cut @ 40°C	175 - 180
ASTM D 2270	Viscosity Index	80 min.
VISUAL	Color	Dark Amber
VISUAL	Appearance	Smooth
ASTM D 2509	Timkin OK Load, lbs.	35 min

Don't Pollute! Dispose or used oil properly!

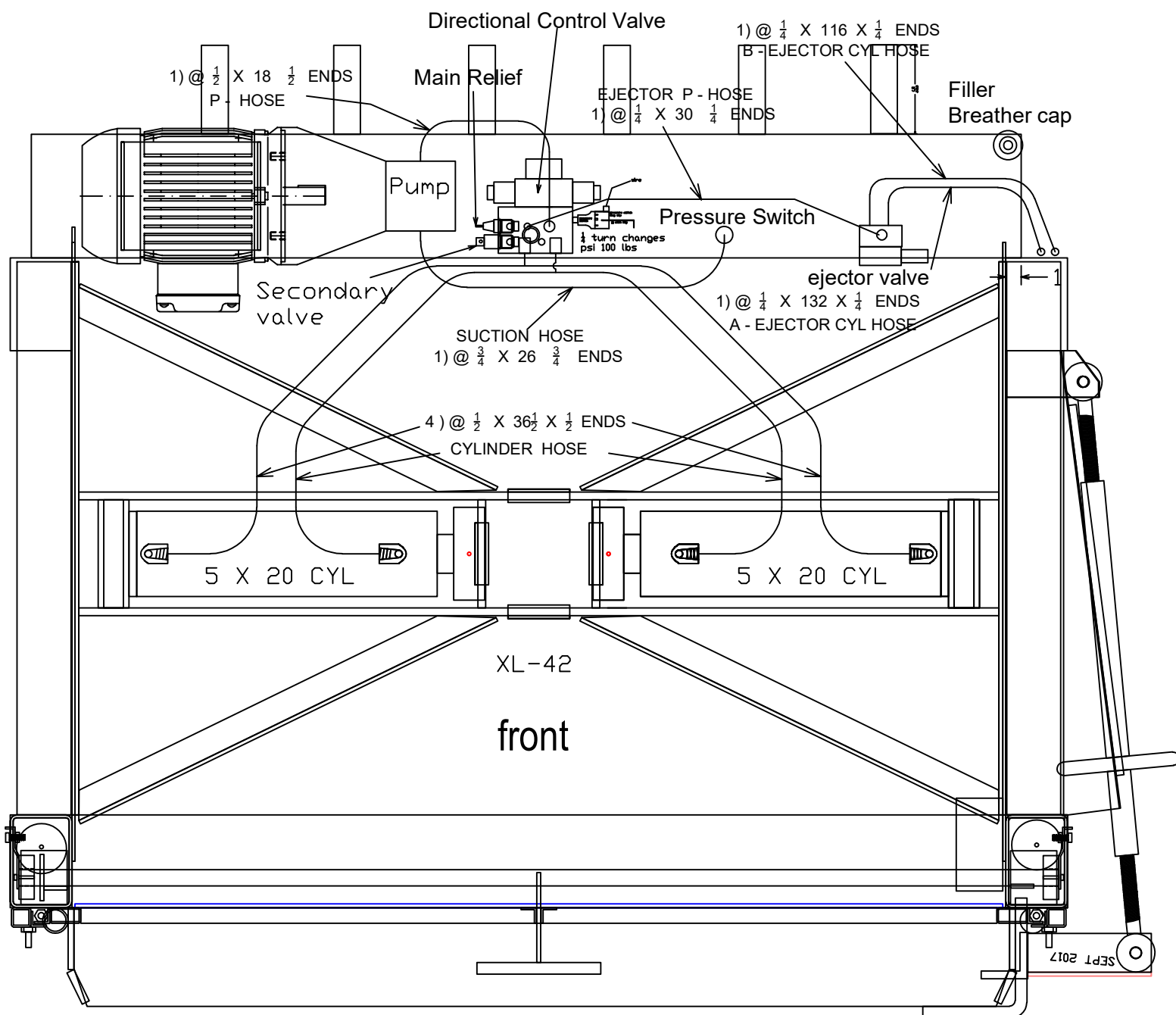
Call your NOCO sales representative for details on our Oil Recovery Program

All reasonable care has been taken to ensure that the above information is accurate as of the date of printing.

NOCO Energy Corp.
Tonawanda, NY 14150
(800) 500-6626

XL-42 Baler Hoses	Bin	XL - 9	Part Number	Description	May 2018
4) @ $\frac{1}{2}$ X 36 $\frac{1}{2}$ ENDS			03 - 185 - 01	CYLINDER HOSE	
1) @ $\frac{3}{4}$ X 26 $\frac{3}{4}$ ENDS			03 - 218 - 01	SUCTION HOSE	
1) @ $\frac{1}{2}$ X 18 $\frac{1}{2}$ ENDS			03 - 173 - 01	P - HOSE	
1) @ $\frac{1}{4}$ X 30 $\frac{1}{4}$ ENDS			03 - 110 - 01	EJECTOR P - HOSE	
1) @ $\frac{1}{4}$ X 132 $\frac{1}{4}$ ENDS			03 - 125 - 01	A - EJECTOR CYL HOSE	
1) @ $\frac{1}{4}$ X 116 $\frac{1}{4}$ ENDS			03 - 115 - 01	B - EJECTOR CYL HOSE	

$\frac{1}{4}$ turn changes psi 100 lbs on both relief and pressure switch

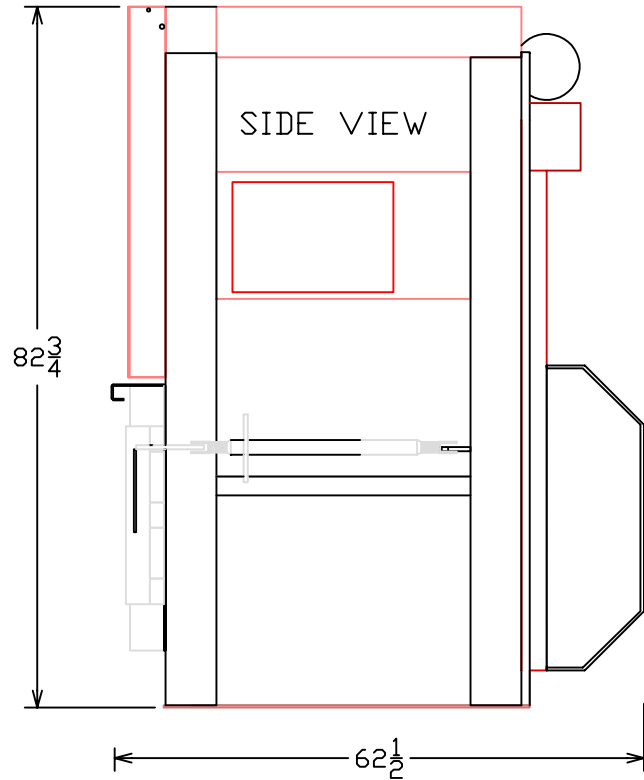
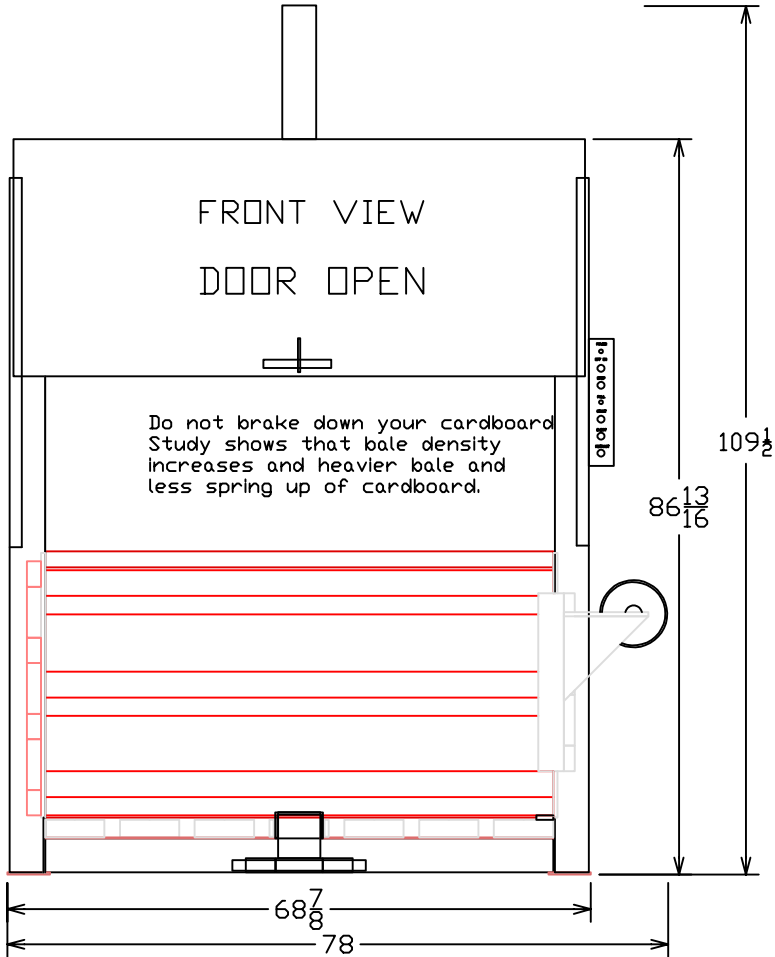


ROTOBALE COMPACTION SOLUTIONS

KENILWORTH, ONTARIO, NOG 2E0,

TEL: 519-323-3673 FAX: 519-323-3816

XL-42 LOW PROFILE VERTICAL BALER



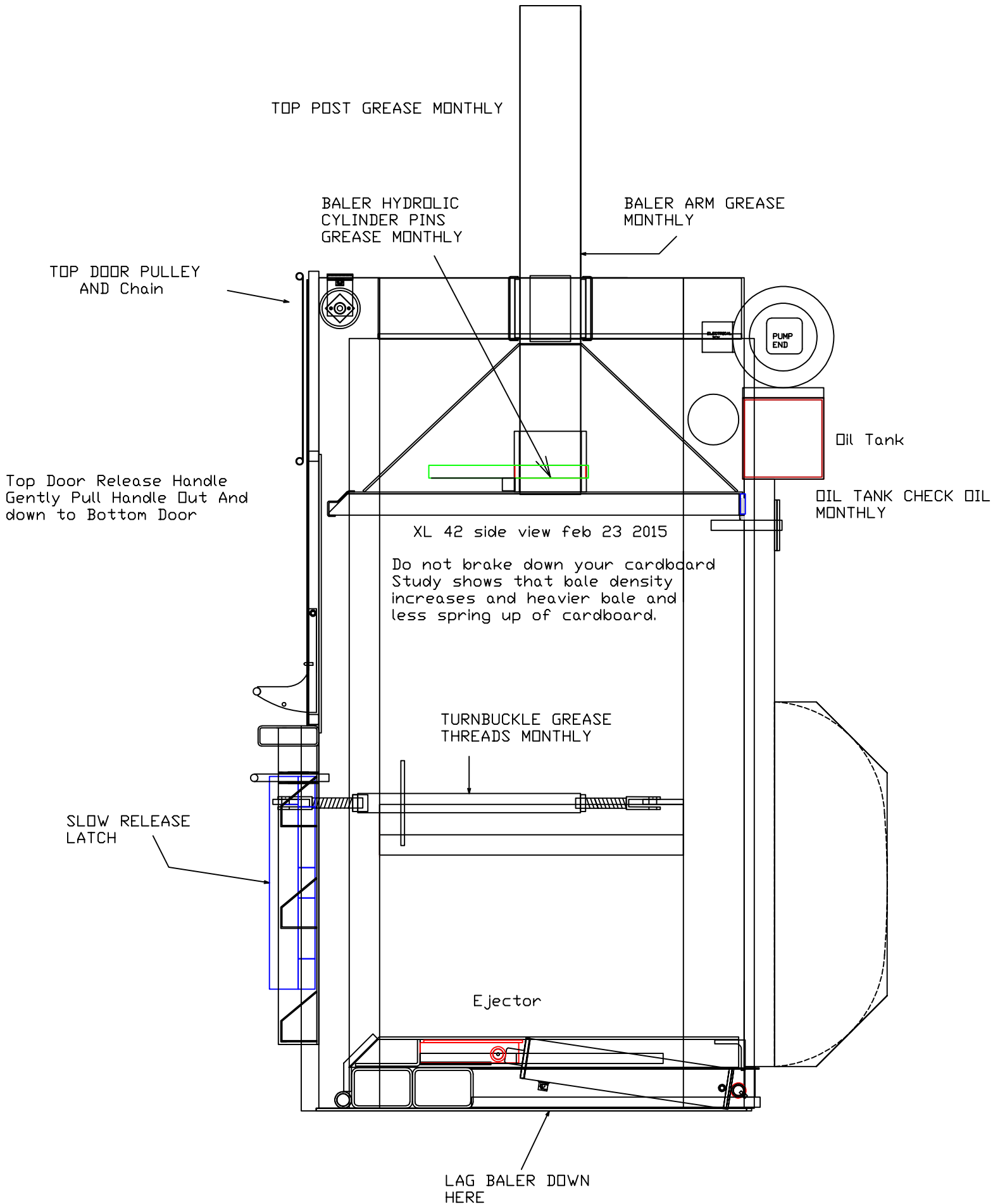
Standard Specification Sheet

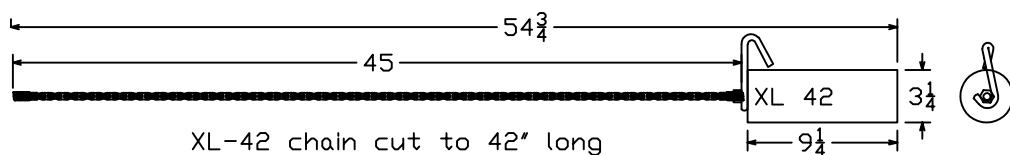
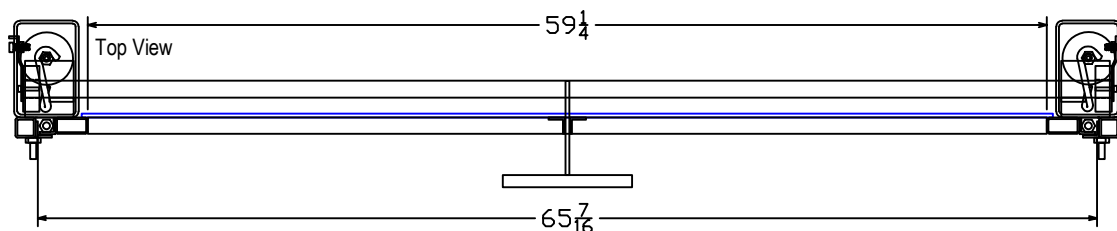
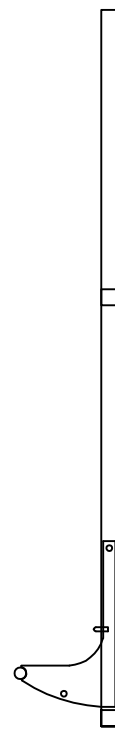
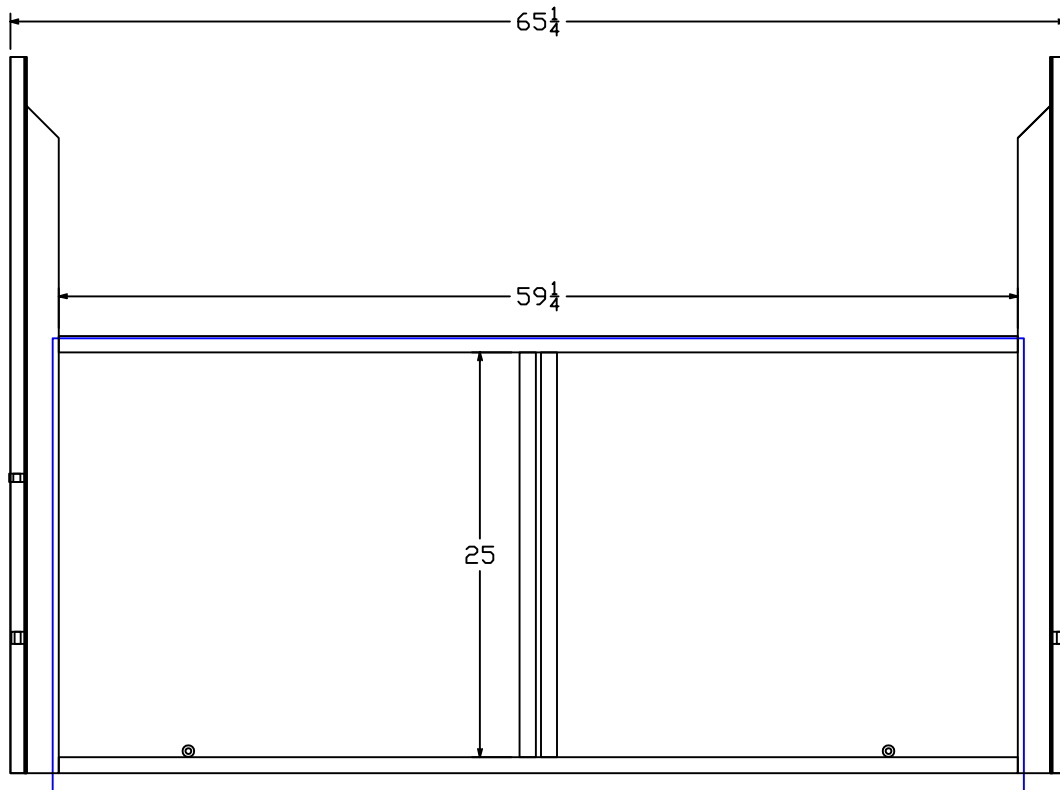
BALE WEIGHT	1000 LBS	BALE TIES	6
MOTOR	5 HP	10 HP	
PUMP SIZE	5.4 GPM	10.8 GPM	
CYCLE TIME	80 SECONDS	40 SECONDS	
VOLTS	208 / 575	208 / 575	
AMPS	15 / 6	30 / 12	
BALE WIDTH 60"	DEPTH 42"	HEIGHT 30"	

FEATURES

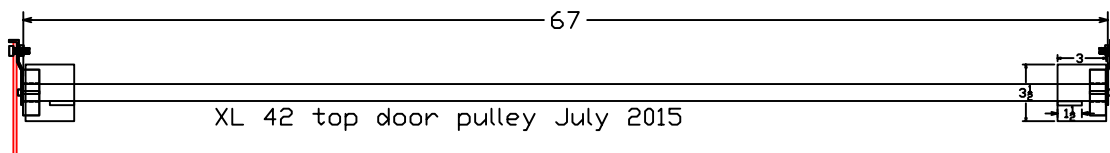
CLOSED BACK SAVES 1 HOUR ON MAKING BALE AND 6 SQUARE FEET OF FLOOR SPACE, BY ALLOWING BALER TO BE MOVED BACK TO WALL. NO MOVING PARTS AT BACK OF BALER INCREASES SAFETY
EMPLOYEE SAFE
LOW FEED HEIGHT
BALE READY LIGHT
HYDRAULIC EJECTOR
FEED DOOR LIFTS AUTOMATICALLY

SPECIFICATIONS ARE SUBJECT TO CHANGE WITHOUT NOTICE
TO ACCOMMODATE EQUIPMENT IMPROVEMENTS

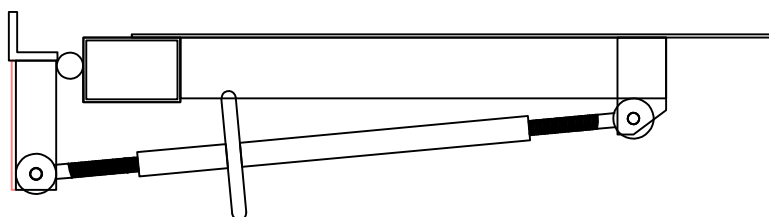
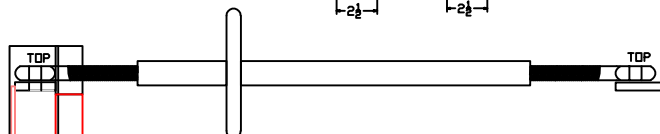




XL-42 chain cut to 42" long
with master link and bolt on each end
it will be 45" long total
Weight is 3 $\frac{1}{4}$ R.B. 9 $\frac{1}{4}$ " long X 2 = 43 $\frac{1}{2}$ lb



2) 3 PIPE 3" long FOR DOOR LIFT PULLEY
2) $\frac{1}{2}$ X 1 $\frac{1}{2}$ X 2 $\frac{1}{2}$ FOR DOOR LIFT PULLEY



ROTOBALE COMPACTION SOLUTIONS

KENILWORTH, ONTARIO, N0G 2E0, P.O. BOX 100, ARTHUR ROAD # 5

TEL: 519-323-3673 FAX: 519-323-3816

XL42 LOW PROFILE VERTICAL BALER

